

6th All Members' Meeting

Of the INTOSAI Working Group on Audit of Extractive Industries (WGEI)



**Critical Minerals in Energy Transition:
Global Trends & Governance Implications**



June 16 - 19, 2026

Headquarters of the Federal Court of Accounts - Brazil
Brasilia - DF



6th All Members' Meeting

Of the INTOSAI Working Group on Audit
of Extractive Industries (WGEI)

FEDERAL COURT OF ACCOUNTS 

Participant Handbook

A message from TCU's President, Minister Vital do Rêgo

The Federal Court of Accounts of Brazil is honored to welcome the delegations of Supreme Audit Institutions, experts, and international partners to the WGEI 6th All Members Meeting – Critical Minerals in Energy Transition: Global Trends and Governance Implications.

Critical minerals are at the heart of the global energy transition. They are essential for renewable energy, batteries, electric mobility, and new technologies. As demand grows, these resources are changing the way countries plan their economies, organize supply chains, and position themselves in the world.

For countries with large mineral reserves, this is an opportunity to promote development and strengthen public revenues. For countries that rely on international supply to meet their mineral needs, it is a matter of energy security and economic stability. In both cases, strong and responsible governance is essential.



This is where Supreme Audit Institutions make a difference. By overseeing public policies, evaluating risks, and ensuring transparency, SAIs help guarantee that decisions taken today will generate sustainable benefits for society tomorrow.

This meeting is an opportunity to exchange experiences, strengthen cooperation, and improve how we oversee the governance of critical minerals in the energy transition.

I wish you all a productive and inspiring event.

A stylized, handwritten signature in black ink, consisting of several loops and flourishes.

Minister VITAL DO RÊGO

President of the Federal Court of Accounts
Brazil Chair of OLACEFS

Table of contents

REGISTRATION	6
ABOUT THE MEETING	8
BEST PRACTICES.....	10
TRAVEL ARRANGEMENTS	11
VISAS AND PASSPORTS	11
GENERAL INFORMATION ABOUT BRAZIL	13
IDENTIFICATION AND BADGE PICK-UP	16
ACCOMMODATION	17
CULTURAL TOUR	22

Registration

All participants must be registered to participate in the WGEI 6th All Members' Meeting.

We strongly encourage participants to send their registration form as early as possible to avoid delays.

To complete your registration, you must fill out the form below. Kindly note that registrations will remain open until May 15th.

WGEI 6th All Members' Meeting:

<https://ee.kobotoolbox.org/x/3zhFDoyi>





Brazilian Federal Court of Accounts (TCU)

About the meeting

- **Introduction and background**

The INTOSAI Working Group on Audit of Extractive Industries (WGEI) was established by the INTOSAI Congress in October 2013 to study the extractive industries (EI) and develop guidance and best practice.

This was in a bid to address the challenges Supreme Audit Institutions (SAIs) face in auditing the EI.

The scope of the WGEI covers oil, gas and solid minerals. Its objective is to promote the audit of extractive industries within the INTOSAI community in order to promote good governance and achievement of the Sustainable Development Goals.

The 6th WGEI All Members' Meeting will take place on June 16 - 19, 2026, at the TCU Headquarters, in Brasília, Brazil. The event will be held in English.

- **Agenda and meeting documents**

The WGEI Chair, SAI Uganda, will provide the Agenda and the Meeting Documents prior to the meeting.

- **Venue**

TCU Headquarters

Address: SAFS Quadra 4, Lote 1 - Asa Sul - Brasília, DF



GET DIRECTIONS



- **Contact Information**

Organizing Committee (SAI Uganda and SAI Brazil)

Telephone contact:

Uganda: +256 772 323231 / +256 758 857587;

Brazil: +55 61 3527-5483 (WhatsApp messaging only) /
+55 61 3527-5344.

Email: wgei6-organizing@oag.go.ug, with a copy to
dci@tcu.gov.br

Best practices

Here is how to make the most of your week:



Stay Updated. Review the documents to be discussed during the 6th WGEI All Members' Meeting.



Visa/Passport. Take a moment to ensure your passport is valid and review the visa information to confirm whether you must apply for an entry visa.



Hotel Booking. Be sure to book your accommodation at least two weeks before the Meeting.



Registration. Remember to register your delegation.

Travel arrangements

All participants should make their own travel arrangements to and from Brasília, Brazil. We encourage you to consider travel insurance in the event of trip cancellation, and travel interruption.

Visas and Passports

Please ensure that passports are valid for at least six months from the date of entry into Brazil and obtain any necessary entry visas. Consult the information regarding visa requirements. Citizens of some countries do not require a visa to travel to Brazil - Entry Visas to Brazil (QGRV).

- **Brazil - Entry Visas to Brazil (QGRV)**

If you require a visa, please apply as early as possible to allow sufficient time for processing. You may request an invitation letter at the Registration Form, and we will reach out to you.

VISIT THE WEBSITE



- **Customs**

Before you travel, please consult the webpage “Visiting Brazil” for details of items that can be transported in and out of Brazil.

VISIT THE WEBSITE



- **Health Requirements**

It's not mandatory to show proof of vaccination or prophylaxis when entering Brazil. However, the Ministry of Health in Brazil advises that international travelers should check their vaccination status before arriving in the country, according to the vaccination calendar guidelines of their country of origin or residence.

International Yellow Fever Vaccination Certificate - Yellow fever vaccination is not required for entry into Brazil; however, it is recommended for foreign travelers. Participants who choose to be vaccinated should do so at least ten days prior to travel. If you have already taken this vaccine before, be sure to have the Vaccination Certificate with you.



General Information about Brazil

Brasília: Brasília, the capital of Brazil, is internationally recognized for its bold modernist architecture and innovative urban planning. Inaugurated in 1960, the city is in the country's Central-West region, serving as the seat of the federal government. It is distinguished for its wide avenues, open spaces, and harmonious integration of architecture and landscape.

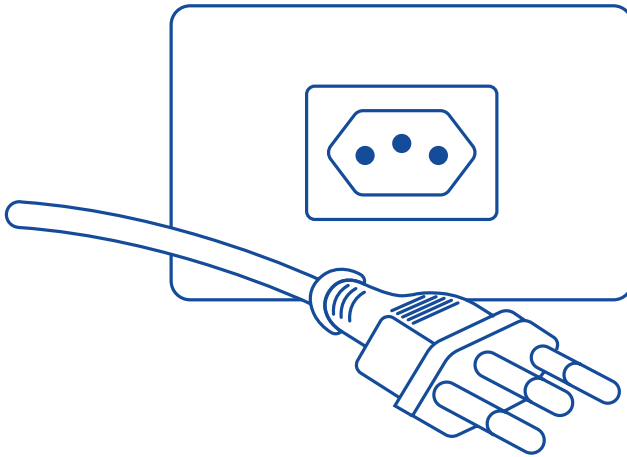
Language: Portuguese is the official language in Brazil; English and Spanish are spoken in some places and can be used in hotels/restaurants/tourist attractions.

Currency: The national currency in Brazil is the Real (plural "reais"). Its sign is "R\$" and its ISO currency code is "BRL". 1 USD is about 5,21 BRL (March 2026).

Weather: In June, Brasília is in the heart of its dry season, with clear skies, mild temperatures, and very little rainfall. It is one of the most stable and pleasant months of the year.

Average temperature: 24–28° C (76–82° F). Days are pleasantly warm, while nights can become quite cool (11° C/ 52° F minimum). June typically has a UV index of 5, which is moderate.

Electricity: The standard voltage in Brasilia is 220 V, and the electrical outlets are type N, as seen below. It is advisable to bring appropriate adapters, particularly for your personal electronic devices and for use in hotel rooms, to ensure compatibility and convenience during your stay.



Transportation: Brasília is a city with convenient transportation options, so we encourage you to choose the option that best suits your needs.

Ride-hailing apps such as Uber and 99Taxi are widely available and reliable.

Additionally, taxis are readily available at the airport upon arrival. Should you choose to use a taxi, we recommend confirming the accepted payment methods with the driver before the journey begins.

On meeting days, a shuttle service will be available. Departures to the event venue will depart exclusively from **Grand Mercure Brasília Eixo Monumental** - North Wing. Participants staying at other hotels who wish to use the shuttle service should proceed to this departure point.

Other transport information: Please note that when taking a taxi, it is important to ask the driver to use the meter or to confirm the fare before starting the ride to ensure an agreed price. Additionally, according to local law, taxi drivers operating in the Federal District – Brasília, must offer all users the option of paying for the ride by credit card, debit card or cash.



Brasília Airport

Identification and Badge Pick-up

TCU staff will be available at the entrance of TCU Headquarters to deliver badges and personal wi-fi login/password before the opening session.

Please be aware that there will be no services provided in advance of the official opening. Restaurants, catering, IT/Office Arrangement Help Desks, Information Desks and other services will be available starting on June 16, 2026.

Identification badges will only be provided to participants.

Identification badges will be required for admission to the meeting venue.

The dress code for the meeting is business professional attire.

Accommodation

The organizing team has secured special discounted rates for participants who wish to stay at selected hotels in the central area of Brasília.

To access the negotiated rate, participants must apply the corresponding discount code directly on the hotel's booking platform or follow available instructions.

Hotel	Booking platform	Discount code / Instructions
Grand Mercure Brasília Eixo Monumental (North Wing)	VISIT THE WEBSITE	WGEI2026
Mercure Líder (North Wing)	VISIT THE WEBSITE	Directly contact reservations team as informed below
Meliá Brasil 21 (South Wing)	VISIT THE WEBSITE	Access the exclusive landing page for the event
Windsor Plaza Brasília Hotel (South Wing)	VISIT THE WEBSITE	WGEI2026WINDSOR

While you are free to choose any accommodation. Participants staying at other hotels who wish to use the shuttle service should proceed to the designated departure point, as detailed in the “Transportation” section.

Additionally, within walking distance from some of the recommended hotels, you’ll find two shopping malls - Brasília ID and Brasília Shopping - where you can meet various needs during your stay.

- **Hotel contacts for assistance**

In case of any issue with your reservation or if you require special arrangements, please contact the hotel teams directly using the details below, as provided by each property:

Grand Mercure Brasília Eixo Monumental - North Wing

Contact person:

Luciana Oliveira

E-mail: h3632-re@accor.com | luciana.oliveira@accor.com

Telephone: +55 (61) 3424-2000

Mercure Líder

Contact person:

Renata Gurgel | Ana Fonseca | Bruno Gonçalves

E-mail: renata.gurgel@accor.com | ana.fonseca@accor.com

bruno.goncalves@accor.com

Telephone: +55 (61) 3426-4000

Meliá Brasil 21

Contact person:

Vitor Hugo Moraes

E-mail: vitor.moraes@melia.com

Telephone: +55 (61) 3218-5515

Windsor Brasília Hotel

Contact person:

Priscilla Araujo

E-mail: grupos.central@windsorhoteis.com.br

Telephone: +55 (21) 2195-7800

Insurance: We strongly advise participants to arrange insurance for individual travel, medical care, and personal effects while attending the Meeting. Participants are not covered for insurance purposes by TCU, which does not accept responsibility for personal injuries, loss, or damage to participants' personal property.

Resources and Facilities

- **Copy Center:** A desk that can offer document reproduction services like printing, copying, scanning, black and white copies, will be available free of charge.
- **Lost and Found Desk:** Found items will be held by our staff during Meeting.
- **Medical:** There will be an ambulance and paramedics on site. If necessary, participants can use Brazilian's public medical network if they do not have health insurance.
- **Wi-Fi is available in all areas throughout the venue.** Wi-Fi login information will be provided along with the identification badge.

Prayer room

The event will provide prayer spaces for participants at TCU's headquarters. Our staff at the venue will be able to assist you.

Food & Beverage

On June 16 to 18, lunch will be served at TCU's Headquarters. Access will be granted only for participants with an identification badge.

A Welcome Event will be held on June 17. Participants who choose not to remain until the end of the program will be provided with transportation back to the official hotel.

An official farewell dinner, hosted by SAI Uganda, will take place on June 18. A cultural tour of the monuments of the Federal Capital of Brazil, Brasília, will be held on June 19 and will be followed by lunch. In addition to scheduled coffee breaks, coffee, water, and tea will be available at the venue throughout the event.



Cultural Tour

Brasília, renowned for its modern architecture and urbanism, has the largest urban area in the world listed as a UNESCO World Heritage Site. The city's master plan was conceived by urban planner Lúcio Costa, while its principal buildings were designed by architect Oscar Niemeyer.

The TCU will organize a morning cultural tour of the monuments of the Federal Capital of Brazil. The three-hour tour will depart from Grand Mercure Brasília Eixo Monumental - North Wing at approximately 9:00 a.m.





Working Group on Audit of Extractive Industries